

# ROE 台達旋轉式編碼器使用說明

## 台达旋转式编码器使用说明

### DELTA ROTARY OPTICAL ENCODER INSTRUCTION SHEET

(English Version)

#### CIRCUIT OF OUTPUT SIGNALS

Before connecting the encoder wirings to the receiver, please identify the type of the output signal with the specification.

##### 1. Connection Table

###### ■ ES/EH/ET Series

Connect the shield wire (bare wire) with the grounding end of equipment for better performance.

Wire Color	Brown	Blue	Black	Black /Red	White	White /Red	Orange	Orange /Red
Function	Vcc	0V	A	$\bar{A}$	B	$\bar{B}$	Z	$\bar{Z}$
Voltage Output	○	○	○	-	○	-	○	-
Open Collector	○	○	○	-	○	-	○	-
Line Driver	○	○	○	○	○	○	○	○
Push Pull	○	○	○	-	○	-	○	-

#### NOTE

- Vcc: It depends on model type (EXX-XXXXX5XX: 5V or EXX-XXXXX8XX: 5~12V or EXX-XXXXX9XX: 7~24V).
- Voltage Output: Internal 2K $\Omega$  pull up resistor is included.
- Line Driver: It is compatible with 26LS32 differential line receiver.

###### ■ AS/AH Series (AXX-XXCXXXXX, AXX-XXVXXXXX)

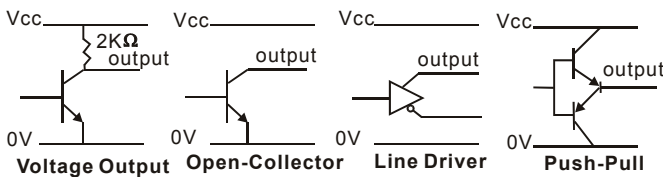
Wire Color	Function	Wire Color	Function
Red	Vcc	Blue	2 <sup>4</sup>
Black	0V	Purple	2 <sup>5</sup>
Brown	2 <sup>0</sup>	Gray	2 <sup>6</sup>
Orange	2 <sup>1</sup>	White	2 <sup>7</sup>
Yellow	2 <sup>2</sup>	Pink	2 <sup>8</sup>
Green	2 <sup>3</sup>	Light Blue	2 <sup>9</sup>

###### ■ MH4 Series

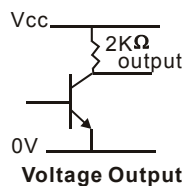
Wire Color	Function	Wire Color	Function
Black	A	Yellow	U
Black/Red	$\bar{A}$	Yellow/Red	$\bar{U}$
White	B	Green	V
White/Red	$\bar{B}$	Green/Red	$\bar{V}$
Orange	Z	Pink	W
Orange/Red	$\bar{Z}$	Pink/Red	$\bar{W}$
Brown	DC +5V	Blue	0V

#### 2. Output Circuit

###### ■ ES/EH/ET Series



###### ■ AS/AH Series (AXX-XXCXXXXX, AXX-XXVXXXXX)



###### ■ MH4 Series

